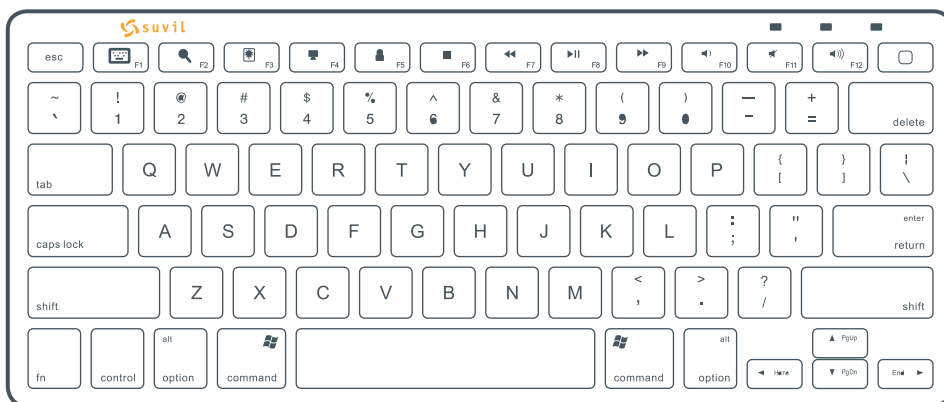




Suvil Technologies Corporation Lmtd.

| KEiPad |

User guide



List of Contents

- 1. System Requeriment**
- 2. Main Features**
- 3. Installation Guide**
 - Installation with iPad**
 - Connect with computer**
- 5. FAQ**



Thanks for purchasing this Bluetooth Keyboard, its with standard 78 keys as well as 13 function keys. This creative and easy-to-use Bluetooth Keyboard will bring you a whole new wireless life experience.

System Requirement

- iPad, Mac OS.
- Windows OS (Windows XP, Windows Vista, Win7).

Main Features

- Bluetooth Version: Bluetooth V2.0, in BROADCOM 2042 chipset •78keys design, with 13 multi-function keys
- Scissor-switch keypad design, comfortable and ergonomic design •Built-in intelligent power manage software for power conservation
- Built-in software solutions with Bluetooth human interface device and comply with the standard version of the Bluetooth SIG Bluetooth 2.0
- Power by 2pcs AAA battery
- Working range: 10m

More information at: **www.suvil.com**

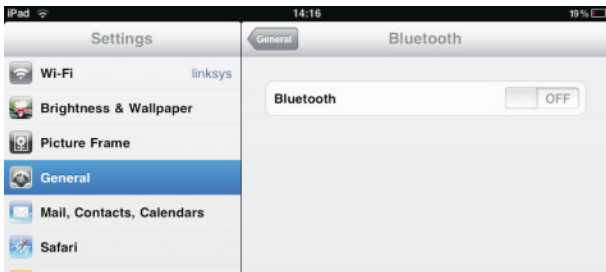
INSTALLATION GUIDE

1. Connect with iPad

1.1. Open the battery cabinet, insert two AAA alkaline batteries.

1.2. Turn the keyboard ON, and press the pairing button. The blue light is flashing, now the keyboard is in pairing mode.

1.3. On your iPad, go to "setti.ugs". Then from the "settings" screen select "General".



1.4. I`m "Bluetooth" on, it will start searching bluetooth devices.

1.5. Once your device finds the KEiPad BT keyboard select "Bluetooth Keyboard" from the list.




1.6. Your device will now give you a 6 digit passkey. Enter this key onto the keyboard, and press Enter to complete the pairing (also on the keyboard).



Now the keyboard is connected with your iPad successfully.

MULTIMEDIA FUNCTION WITH IPAD

- FN** + **F1** Virtual keyboard
- FN** + **F2** Spotlight search
- FN** + **F3** Picture frame mode
- FN** + **F4** Turn off backlight
- FN** + **F5** Screen lock
- FN** + **F6** Music stop
- FN** + **F7** Previous track
- FN** + **F8** Play / Pause
- FN** + **F9** Next track
- FN** + **F10** Volume down
- FN** + **F11** Mute
- FN** + **F12** Volume up
-  Home

CONNECT WITH THE COMPUTER

Before you connect the Bluetooth Keyboard, please make sure there is bluetooth function in your computer. Software available like Widcomm recommended), IVT or the Microsoft built-in software...

1. Open the battery cabinet, inset two AAA alkaline batteries.
2. Turn the keyboard ON, and press the pairing button. The blue light is flashing, now the keyboard is in pairing mode.

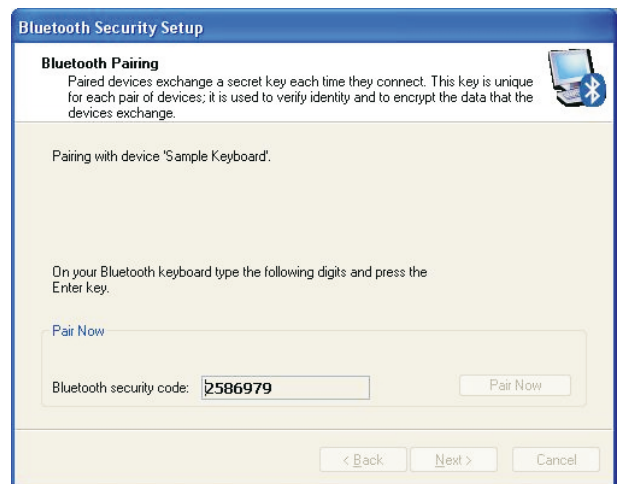
A: Install with Widcomm (recommended)



1. Double click the Icon, the main Window pops up, select Bluetooth -Add Bluetooth facility. Click Next button In the Setup Guide window.



2. When the system finds the keyboard, select it and click Next.
3. Input the stochastic Match Code in Bluetooth keyboard, and press Enter.

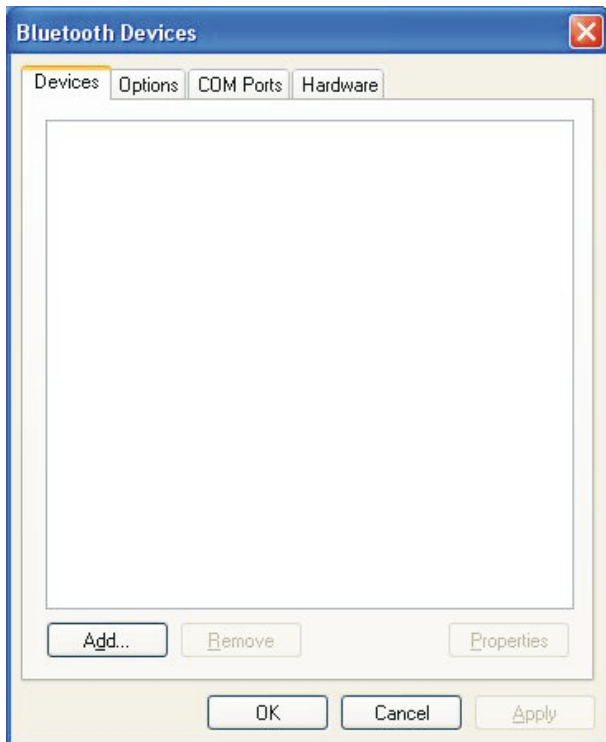


4. Now you can use your keyboard at ease.

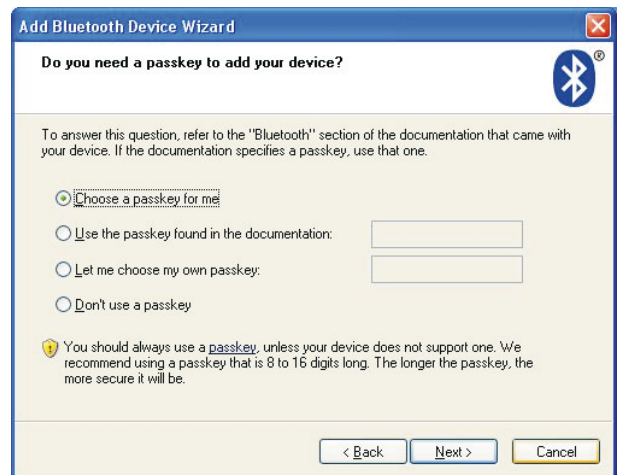
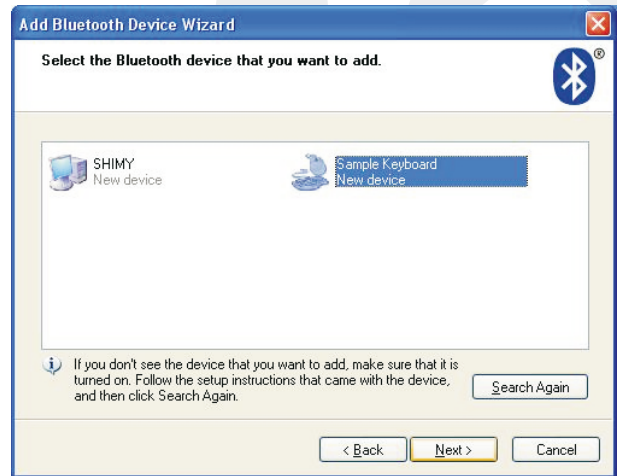
TIPS: If no signal received after 10 minutes, the keyboard will change to the power safe mode. If you want to make it into use, just click the "Enter" key. After the connection between the keyboard and the dongle, if you drag off the Dongle or turn off the computer, the keyboard will shut down, clicking the "Enter" key of the keyboard will wake it up.

B: Install with Microsoft built-in software

1. Make sure that the Bluetooth Function has been activated. Double click in the Bluetooth Icon on the Task Bar or in the Control Panel, open the "Bluetooth Management" window, click "Add, tick off" facility is ready for searching, click Next.

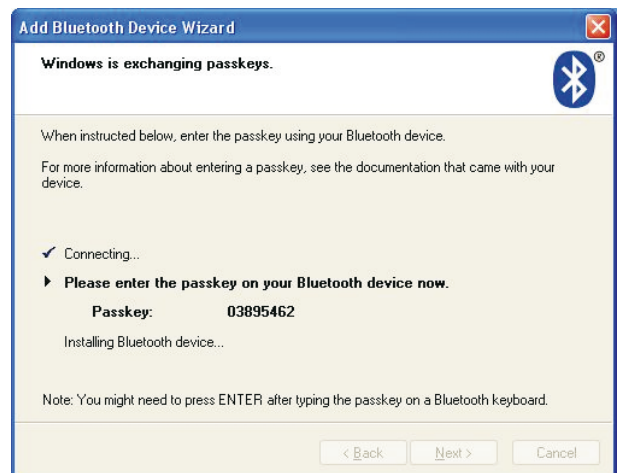


2. Wait till the keyboard is found, select keyboard and click Next.



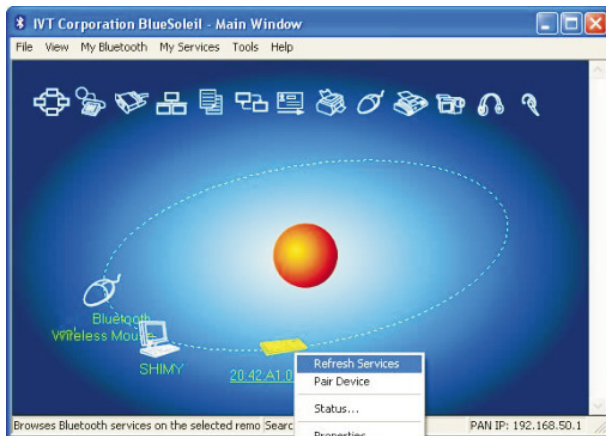
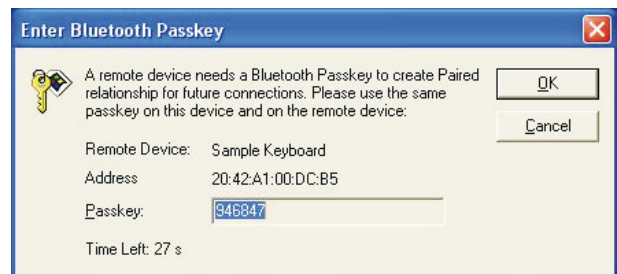
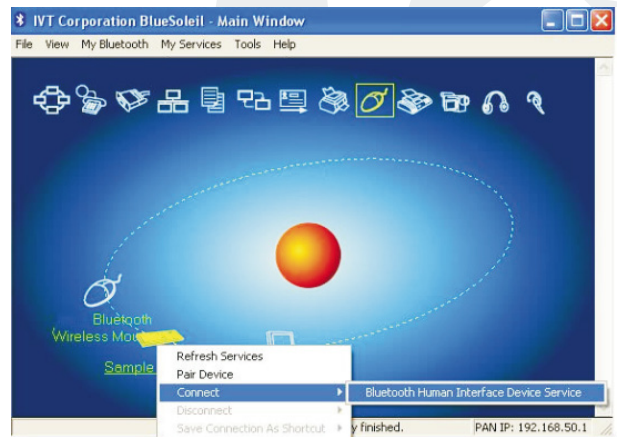
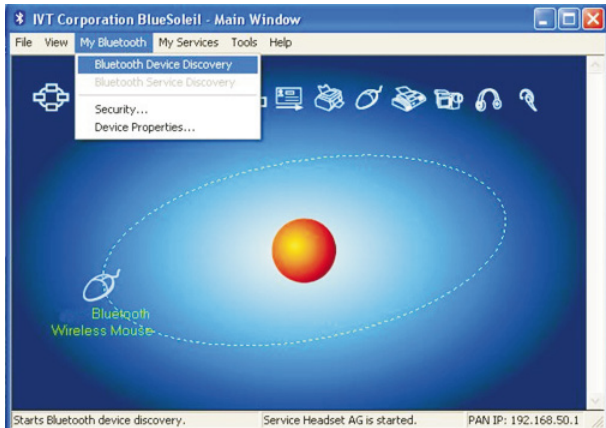
3. Select Choose a pass key for me, click Next.

4. Input the pass key and press Enter in Bluetooth keyboard, click Next, the system will finish the installation of the new facility automatically.



C: Install with IVT Software

1. Make sure that the Bluetooth Function has been activated. Double click the Bluetooth Icon, open Management window, select Search for Bluetooth facilities or click the Round Ball in the middle of the window.



2. Click the Bluetooth Keyboard found, click the right button for Refresh Service.
 3. Select the Bluetooth Keyboard again, click the right button for Connect-Bluetooth Input Service, input the stochastic pass key, the system will auto install the HID facility. After that you can use your Bluetooth Keyboard at ease.

FAQ

If unable to connect the Bluetooth Keyboard to the computer, or the Keyboard work unconventionally, please try the steps below:

- 1. Before you use your Bluetooth Keyboard, please make sure you have done the Bluetooth Dongle installation procedure, and the Bluetooth facility is turned on.*
- 2. Make sure that the Computer is connected to the Bluetooth Keyboard. If they are matched to each other before, then under the Standby State, just click the "enter" key of the keyboard.*
- 3. Make sure that the keyboard is within the effective range---10M.*
- 4. Make sure that there's no change in the Bluetooth facility. If anything have been changed, please reinstall the Bluetooth Keyboard.*
- 5. If your Bluetooth facility is connected to other Bluetooth products, please kindly confirm that the speed of the Bluetooth facility is enough.*
- 6. Please kindly check the batteries. If they are short of power, replace them for new ones.*

